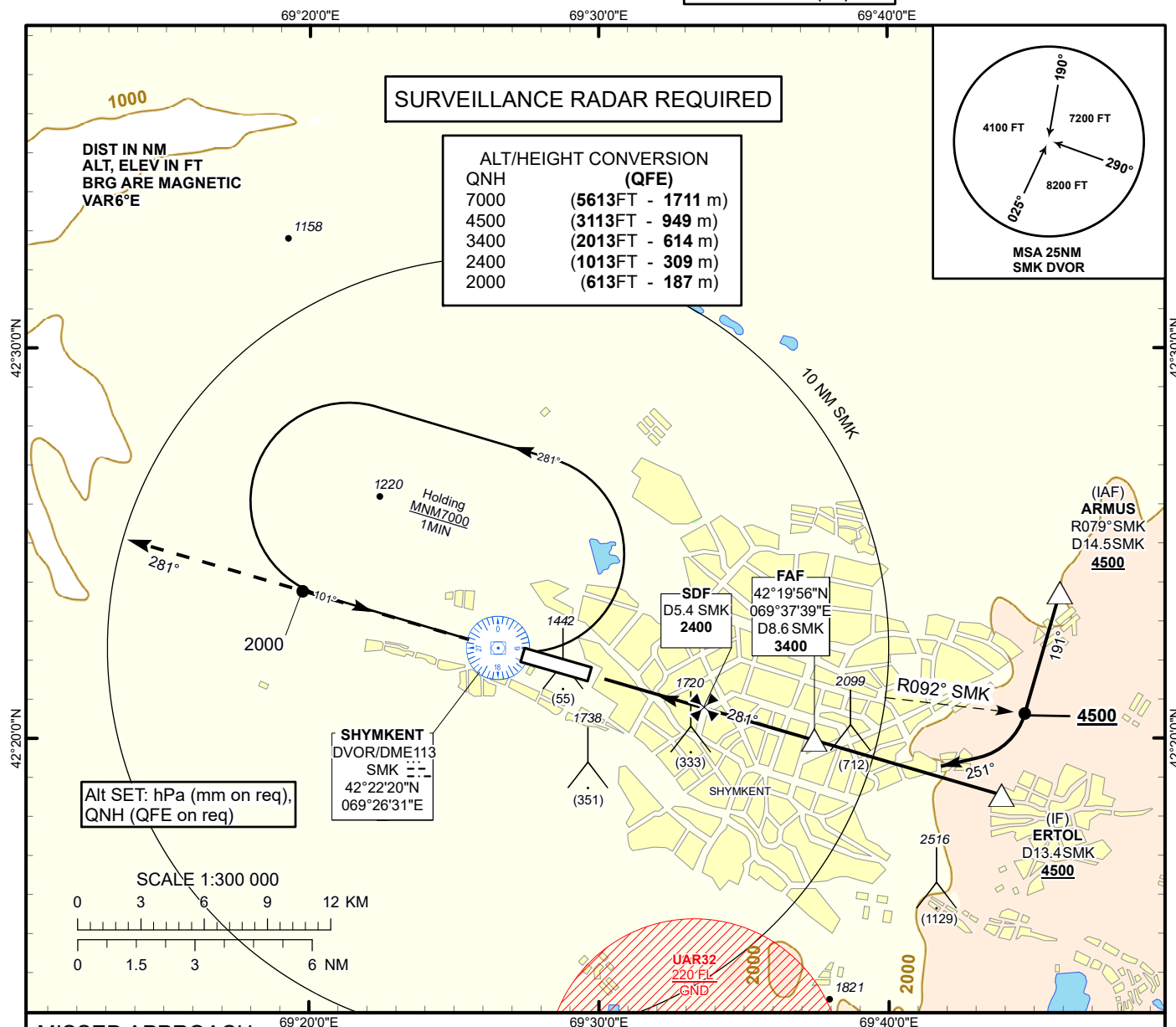


INSTRUMENT  
APPROACH  
CHART - ICAO

AERODROME ELEV 1387 FT  
HEIGHTS RELATED TO  
AD ELEV

SHYMKENT TOWER 125.9  
SHYMKENT ATIS (EN) 119.2  
SHYMKENT ATIS (RU) 126.6

SHYMKENT  
VOR/DME Y  
RWY 28



**MISSED APPROACH**

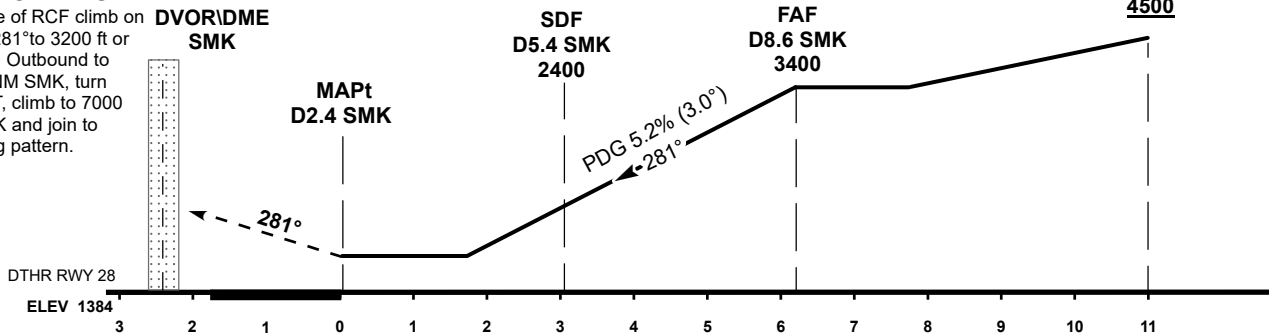
Climb on track 281° to 4500ft.  
After passing 2000 ft radar  
vectoring will be provided.

**RADIO FAILURE**

In case of RCF climb on  
track 281° to 3200 ft or  
above. Outbound to  
D5.2 NM SMK, turn  
RIGHT, climb to 7000  
to SMK and join to  
holding pattern.

TRANSITION ALT 10000 FT

IF  
ERTOL  
D13.4 SMK  
4500



Aircraft Category		A	B	C	D	DIST to DTHR	NM	1.0	2.0	3.0	4.0	5.0	6.2
Straight-in Approach OCA/H						DME SMK	NM	3.4	4.4	5.4	6.4	7.4	8.6
	VOR/DME SDF	1970(590)	1970(590)	1970(590)	1970(590)	ALTITUDE	FT	1754	2073	2391	2710	3028	3400
	VOR/DME WO SDF	2370(980)	2370(980)	2370(980)	2370(980)	HEIGHT	FT	(367)	(686)	(1004)	(1323)	(1641)	(2013)
Aerodrome Operating Minima MDH ft x RVR (CMV)	VOR/DME					GS	Kt	80	100	120	140	160	180
						Desc.Rate( 5.2%)	ft/min	420	530	630	740	840	950
						FAF-MAPt(6.2NM)	min:sec	4:39	3:43	3:06	2:39	2:20	2:04

CHANGE: FAF ALT, editorial.

SHYMKENT  
VOR/DME Y

AERONAUTICAL DATA TABULATION

VOR approach to RWY28 from ARMUS, ERTOL	
Fix/point	Coordinates
(SDF) D5.4 SMK	42° 20' 49.2"N 069° 33' 32.7"E
(FAF) D8.6 SMK	42° 19' 55.9"N 069° 37' 38.6"E
ERTOL (IF) D13.4 SMK	42° 18' 33.5"N 069° 43' 53.6"E
ARMUS (IAF) R079°, D14.5 SMK	42° 23' 44.6"N 069° 45' 55.9"E
SMK DVOR/DME	42° 22' 20.4"N 069° 26' 30.6"E
DTHR RWY 28	42° 21' 40.62"N 069° 29' 34.86"E
Final approach descent angle is 3°	